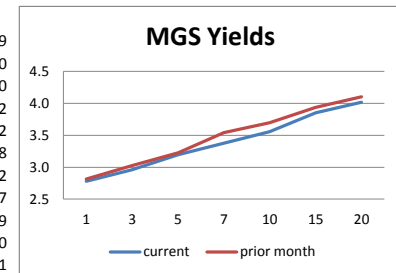


end January 2012 - 1 Month Return + Index Level

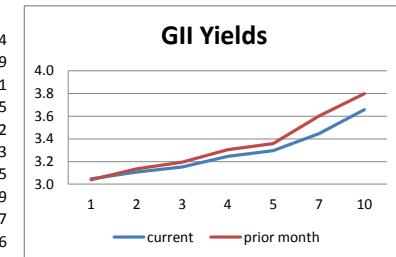
	Combined - Total		Corporate - Total	
All	1.0%	1,507.362	1.9%	1,712.317
1-3 (short)	0.3%	1,359.083	0.5%	1,510.429
3-7 (medium)	0.7%	1,494.486	0.8%	1,644.980
7+ (long)	1.9%	1,694.065	3.0%	1,901.335
1-5	0.4%	1,406.837	0.6%	1,540.715
5-10	1.1%	1,581.670	1.3%	1,733.660
10+	2.4%	1,798.106	3.7%	1,976.236
1-10	0.7%	1,463.288	0.9%	1,622.696
0+	0.9%	1,471.009	1.8%	1,682.821
0-5	0.4%	1,386.413	0.5%	1,511.554
0-10	0.7%	1,442.941	0.8%	1,594.194

MGS and GII yields declined slightly over the month while over the year there were more significant declines particularly at the longer end. Commercial paper yields declined over the year, particularly at the longer end of the higher quality credit curves. Consequently longer dated MGS and GII indexes performed better than the short dated ones over the month and year. And commercial indexes performed better than government ones over the 1 month and 1 year.

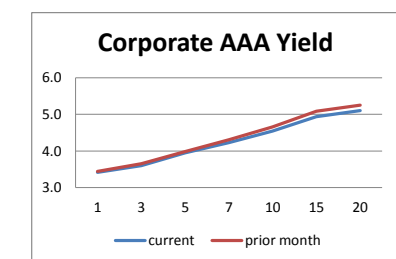
	Government - Conv + Islamic		Cagamas		Conventional - Govt + Corp		Islamic - Govt + Corp		Supranational - Conv + Islamic	
All	0.8%	1,087.708	0.5%	1,423.785	1.0%	1,095.352	1.0%	1,105.376	0.6%	1,093.759
1-3 (short)	0.3%	1,058.719	0.3%	1,356.460	0.3%	1,059.943	0.4%	1,061.465	0.3%	1,063.410
3-7 (medium)	0.7%	1,087.284	0.5%	1,458.383	0.7%	1,088.421	0.8%	1,095.310	0.6%	1,103.420
7+ (long)	1.4%	1,121.157	0.8%	1,428.688	2.0%	1,144.322	1.7%	1,144.651	1.4%	1,159.802
1-5	0.4%	1,065.637	0.3%	1,390.073	0.4%	1,066.425	0.4%	1,070.242	0.4%	1,064.272
5-10	1.1%	1,105.055	0.7%	1,499.086	1.1%	1,103.288	1.3%	1,122.450	0.5%	1,102.458
10+	1.4%	1,141.054	1.1%	1,399.436	2.4%	1,176.491	2.4%	1,205.371	1.4%	1,159.802
1-10	0.7%	1,082.343	0.5%	1,416.573	0.7%	1,081.144	0.8%	1,094.917	0.4%	1,081.427
0+	0.7%	1,083.747	0.5%	1,408.387	0.9%	1,090.626	0.9%	1,100.152	0.6%	1,090.029
0-5	0.4%	1,062.633	0.3%	1,362.553	0.4%	1,063.409	0.4%	1,066.911	0.4%	1,061.810
0-10	0.6%	1,078.583	0.4%	1,397.835	0.6%	1,077.453	0.8%	1,090.346	0.4%	1,078.001



	MGS		Cagamas Conventional		Government Conventional		Corporate - Conventional		Supranational Conventional	
All	0.8%	2,711.369	0.5%	1,122.200	0.8%	1,086.833	2.7%	1,717.162	0.6%	1,099.074
1-3 (short)	0.3%	2,391.820	0.3%	1,081.281	0.3%	1,058.550	0.5%	1,514.566	0.3%	1,066.409
3-7 (medium)	0.6%	2,701.422	0.5%	1,115.473	0.6%	1,086.551	0.9%	1,654.761	0.6%	1,110.221
7+ (long)	1.4%	3,314.264	0.8%	1,163.177	1.4%	1,123.734	4.4%	1,574.973	1.4%	1,168.375
1-5	0.4%	1,386.144	0.3%	1,090.418	0.4%	1,065.255	0.6%	1,564.059	0.4%	1,067.272
5-10	1.1%	1,541.923	0.7%	1,145.552	1.0%	1,101.299	1.3%	1,730.651	0.5%	1,109.253
10+	1.4%	1,731.709	1.1%	1,186.491	1.4%	1,139.501	4.5%	1,669.328	1.4%	1,168.375
1-10	0.7%	1,435.799	0.5%	1,115.597	0.7%	1,079.960	0.8%	1,619.574	0.4%	1,086.149
0+	0.7%	1,276.642	0.5%	1,114.820	0.7%	1,082.962	2.5%	1,690.385	0.6%	1,094.837
0-5	0.4%	1,367.322	0.3%	1,084.887	0.4%	1,062.219	0.5%	1,539.265	0.4%	1,064.666
0-10	0.6%	1,419.238	0.5%	1,107.829	0.6%	1,076.342	0.7%	1,596.600	0.4%	1,082.272



	GII		Cagamas Islamic		Government Islamic		Corporate - Islamic		Supranational Islamic	
All	0.8%	1,387.788	0.5%	1,109.610	0.8%	1,090.447	1.4%	1,708.854		
1-3 (short)	0.3%	1,348.608	0.3%	1,070.522	0.3%	1,059.406	0.4%	1,510.427		
3-7 (medium)	0.8%	1,347.595	0.4%	1,115.214	0.8%	1,088.220	0.8%	1,627.843		
7+ (long)	1.4%	1,234.697	0.9%	1,163.013	1.4%	1,119.461	2.0%	1,867.524		
1-5	0.4%	1,371.583	0.3%	1,082.071	0.4%	1,066.617	0.6%	1,518.067		
5-10	1.3%	1,426.087	0.7%	1,144.538	1.2%	1,114.106	1.3%	1,743.122		
10+	-	-	1.1%	1,177.902	1.1%	1,164.898	2.5%	2,022.840		
1-10	0.8%	1,391.308	0.4%	1,102.067	0.8%	1,088.828	1.0%	1,626.073		
0+	0.8%	1,359.395	0.4%	1,099.880	0.7%	1,086.377	1.3%	1,674.849		
0-5	0.4%	1,350.975	0.3%	1,075.608	0.4%	1,063.678	0.5%	1,483.288		
0-10	0.8%	1,362.544	0.4%	1,093.253	0.7%	1,084.826	0.9%	1,589.687		



end January 2012 - 1 Year Return + rate change

	Combined - Total	Corporate - Total
All	6.3%	9.4%
1-3 (short)	3.7%	4.2%
3-7 (medium)	5.5%	6.5%
7+ (long)	9.5%	13.2%
1-5	4.1%	4.8%
5-10	6.9%	8.4%
10+	11.8%	14.6%
1-10	5.3%	6.4%
0+	5.9%	8.8%
0-5	3.9%	4.5%
0-10	5.0%	6.0%

	Government - Conv + Islamic	Cagamas
All	5.6%	5.9%
1-3 (short)	3.6%	4.0%
3-7 (medium)	5.3%	5.8%
7+ (long)	8.2%	8.6%
1-5	4.0%	4.5%
5-10	6.7%	7.4%
10+	9.5%	9.5%
1-10	5.2%	5.6%
0+	5.3%	5.5%
0-5	3.8%	4.2%
0-10	4.9%	5.3%

	Conventional - Govt + Corp
All	6.2%
1-3 (short)	3.7%
3-7 (medium)	5.4%
7+ (long)	9.9%
1-5	4.1%
5-10	6.5%
10+	11.7%
1-10	5.1%
0+	5.8%
0-5	3.9%
0-10	4.8%

	Islamic - Govt + Corp
All	6.4%
1-3 (short)	3.8%
3-7 (medium)	5.5%
7+ (long)	8.9%
1-5	4.2%
5-10	7.6%
10+	12.5%
1-10	5.8%
0+	6.1%
0-5	4.0%
0-10	5.5%

	Supranational - Conv + Islamic
All	5.6%
1-3 (short)	3.7%
3-7 (medium)	6.0%
7+ (long)	10.4%
1-5	3.7%
5-10	5.9%
10+	10.4%
1-10	4.7%
0+	5.5%
0-5	3.7%
0-10	4.6%

	MGS	Cagamas Conventional
All	5.6%	6.2%
1-3 (short)	3.6%	4.4%
3-7 (medium)	5.3%	5.8%
7+ (long)	8.6%	8.5%
1-5	4.0%	4.6%
5-10	6.4%	7.4%
10+	9.5%	9.4%
1-10	5.0%	6.0%
0+	5.3%	5.9%
0-5	3.8%	4.3%
0-10	4.7%	5.6%

	Government Conventional
All	5.6%
1-3 (short)	3.6%
3-7 (medium)	5.3%
7+ (long)	8.6%
1-5	4.0%
5-10	6.4%
10+	9.5%
1-10	5.1%
0+	5.3%
0-5	3.8%
0-10	4.8%

	Corporate - Conventional
All	10.7%
1-3 (short)	4.4%
3-7 (medium)	6.4%
7+ (long)	15.7%
1-5	4.9%
5-10	7.7%
10+	16.0%
1-10	5.9%
0+	9.9%
0-5	4.6%
0-10	5.5%

	Supranational Conventional
All	5.6%
1-3 (short)	3.7%
3-7 (medium)	6.0%
7+ (long)	10.4%
1-5	3.7%
5-10	5.9%
10+	10.4%
1-10	4.7%
0+	5.5%
0-5	3.7%
0-10	4.6%

	GII	Cagamas Islamic
All	5.6%	5.6%
1-3 (short)	3.6%	3.9%
3-7 (medium)	5.1%	5.7%
7+ (long)	7.4%	8.6%
1-5	3.9%	4.4%
5-10	7.2%	7.5%
10+		9.5%
1-10	5.6%	5.3%
0+	5.3%	5.2%
0-5	3.8%	4.1%
0-10	5.3%	5.0%

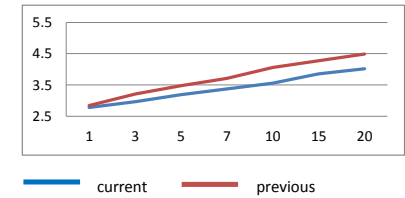
	Government Islamic
All	5.6%
1-3 (short)	3.7%
3-7 (medium)	5.2%
7+ (long)	7.5%
1-5	4.0%
5-10	7.3%
10+	9.5%
1-10	5.5%
0+	5.3%
0-5	3.8%
0-10	5.3%

	Corporate - Islamic
All	8.4%
1-3 (short)	4.1%
3-7 (medium)	6.6%
7+ (long)	11.2%
1-5	4.7%
5-10	8.7%
10+	12.7%
1-10	6.7%
0+	7.9%
0-5	4.4%
0-10	6.3%

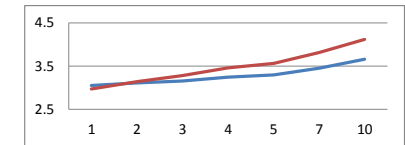
	Supranational Islamic
--	-----------------------

	1	3	5	7	10
Cagamas	0.13	-0.06	-0.14	-0.25	-0.37
Khazanah	0.10	-0.09	-0.15	-0.27	-0.42
AAA (BG)	0.10	-0.09	-0.16	-0.27	-0.43
AA (BG)	0.01	-0.17	-0.24	-0.38	-0.54
A (BG)	-0.34	-0.53	-0.51	-0.40	-0.37
MGS	-0.06	-0.25	-0.29	-0.34	-0.50
GII	0.08	-0.13	-0.27	-0.37	-0.46

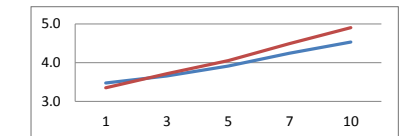
MGS Yields - current and previous year



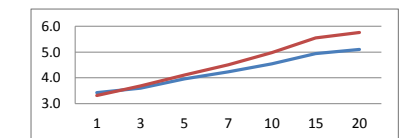
GII Yields - current and previous year



Cagmas Yields - current and previous year



Corporate Yield - AAA - current and previous year



end January 2012 - Year to Date

	Combined - Total	Corporate - Total
All	1.0%	1.9%
1-3 (short)	0.3%	0.5%
3-7 (medium)	0.7%	0.8%
7+ (long)	1.9%	3.0%
1-5	0.4%	0.6%
5-10	1.1%	1.3%
10+	2.4%	3.7%
1-10	0.7%	0.9%
0+	0.9%	1.8%
0-5	0.4%	0.5%
0-10	0.7%	0.8%

	Government - Conv + Islamic
All	0.8%
1-3 (short)	0.3%
3-7 (medium)	0.7%
7+ (long)	1.4%
1-5	0.4%
5-10	1.1%
10+	1.4%
1-10	0.7%
0+	0.7%
0-5	0.4%
0-10	0.6%

	Cagamas
All	0.5%
1-3 (short)	0.3%
3-7 (medium)	0.5%
7+ (long)	0.8%
1-5	0.3%
5-10	0.7%
10+	1.1%
1-10	0.5%
0+	0.5%
0-5	0.3%
0-10	0.4%

	Conventional - Govt + Corp
All	1.0%
1-3 (short)	0.3%
3-7 (medium)	0.7%
7+ (long)	2.0%
1-5	0.4%
5-10	1.1%
10+	2.4%
1-10	0.7%
0+	0.9%
0-5	0.4%
0-10	0.6%

	Islamic - Govt + Corp
All	1.0%
1-3 (short)	0.4%
3-7 (medium)	0.8%
7+ (long)	1.7%
1-5	0.4%
5-10	1.3%
10+	2.4%
1-10	0.8%
0+	0.9%
0-5	0.4%
0-10	0.8%

	Supranational - Conv + Islamic
All	0.6%
1-3 (short)	0.3%
3-7 (medium)	0.6%
7+ (long)	1.4%
1-5	0.4%
5-10	0.5%
10+	1.4%
1-10	0.4%
0+	0.6%
0-5	0.4%
0-10	0.4%

	MGS
All	0.8%
1-3 (short)	0.3%
3-7 (medium)	0.6%
7+ (long)	1.4%
1-5	0.4%
5-10	1.1%
10+	1.4%
1-10	0.7%
0+	0.7%
0-5	0.4%
0-10	0.6%

	Cagamas Conventional
All	0.5%
1-3 (short)	0.3%
3-7 (medium)	0.5%
7+ (long)	0.8%
1-5	0.3%
5-10	0.7%
10+	1.1%
1-10	0.5%
0+	0.5%
0-5	0.3%
0-10	0.5%

	Government Conventional
All	0.8%
1-3 (short)	0.3%
3-7 (medium)	0.6%
7+ (long)	1.4%
1-5	0.4%
5-10	1.0%
10+	1.4%
1-10	0.7%
0+	0.7%
0-5	0.4%
0-10	0.6%

	Corporate - Conventional
All	2.7%
1-3 (short)	0.5%
3-7 (medium)	0.9%
7+ (long)	4.4%
1-5	0.6%
5-10	1.3%
10+	4.5%
1-10	0.8%
0+	2.5%
0-5	0.5%
0-10	0.7%

	Supranational Conventional
All	0.6%
1-3 (short)	0.3%
3-7 (medium)	0.6%
7+ (long)	1.4%
1-5	0.4%
5-10	0.5%
10+	1.4%
1-10	0.4%
0+	0.6%
0-5	0.4%
0-10	0.4%

	GII
All	0.8%
1-3 (short)	0.3%
3-7 (medium)	0.8%
7+ (long)	1.4%
1-5	0.4%
5-10	1.3%
10+	1.1%
1-10	0.8%
0+	0.8%
0-5	0.4%
0-10	0.8%

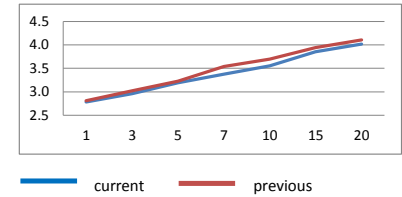
	Cagamas Islamic
All	0.5%
1-3 (short)	0.3%
3-7 (medium)	0.4%
7+ (long)	0.9%
1-5	0.3%
5-10	0.7%
10+	1.1%
1-10	0.4%
0+	0.4%
0-5	0.3%
0-10	0.4%

	Government Islamic
All	0.8%
1-3 (short)	0.3%
3-7 (medium)	0.8%
7+ (long)	1.4%
1-5	0.4%
5-10	1.2%
10+	1.1%
1-10	0.8%
0+	0.7%
0-5	0.4%
0-10	0.7%

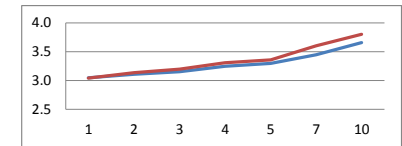
	Corporate - Islamic
All	8.4%
1-3 (short)	4.1%
3-7 (medium)	6.6%
7+ (long)	11.2%
1-5	4.7%
5-10	8.7%
10+	12.7%
1-10	6.7%
0+	7.9%
0-5	4.4%
0-10	6.3%

	Supranational Islamic
All	0.6%
1-3 (short)	0.3%
3-7 (medium)	0.6%
7+ (long)	1.4%
1-5	0.4%
5-10	0.5%
10+	1.4%
1-10	0.4%
0+	0.6%
0-5	0.4%
0-10	0.4%

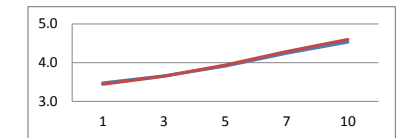
MGS Yields - current and end previous year



GII Yields - current and end previous year



Cagamas Yields - current and end previous year



Corporate Yield - AAA - current and end previous year

